



Main Features:-

- ◆ ISO 5211 for Direct Mount
- ◆ Screwed BSPP, Reduced Bore
- ◆ Temperature -29°C to 220°C, Rated PN63
- ◆ Stainless Steel Body, Ball & Stem
- ◆ 10121—L Port, 10125—T Port

*Temperature and pressure determined by valve body, seat etc.



Suitable Applications & Approvals:



INDUSTRY

SERIES: 10121/10125

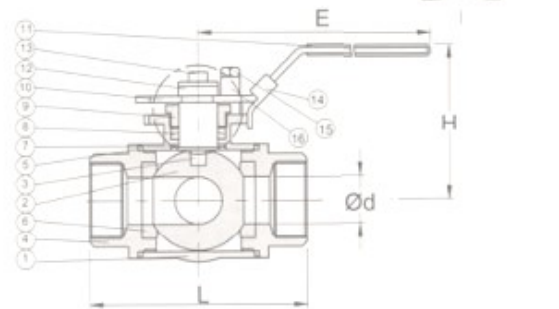
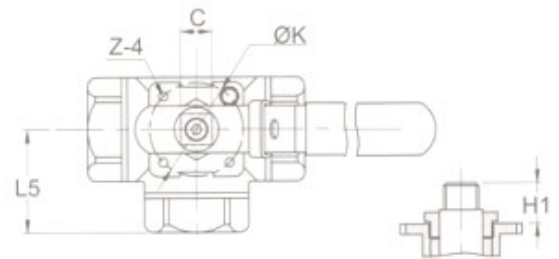
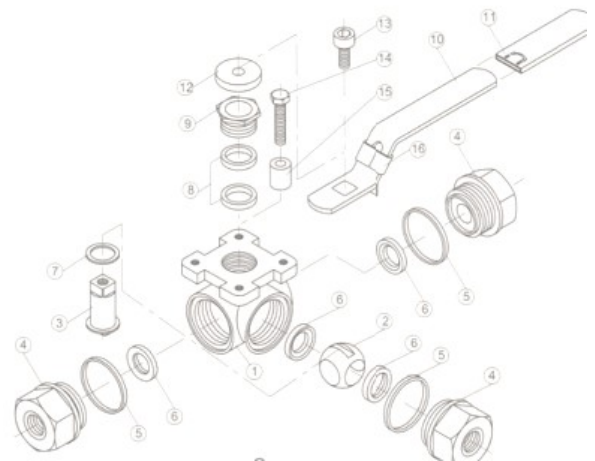
MANUFACTURER:



VALVE DIMENSIONS

No	Name	Materials
1	Body	SS CF8M
2	Ball	SS CF8M
3	Stem	SS 316
4	Cap	SS CF8M
5	Body Seal	PTFE
6	Ball Seat	PTFE
7	Thrust Washer	PTFE
8	Stem Packing	PTFE
9	Gland Nut	AISI 304
10	Handle	AISI 304
11	Handle Sleeve	Plastic
12	Handle Washer	AISI 304
13	Handle Nut	AISI 304
14	Lock Device	AISI 304
15	Stopper Pin	AISI 304
16	Locking Device	AISI 304

DN	Ød	L	L5	E	H	H1	C	ØK	Z-4	Nm
1/4"	11	69.4	34.6	133.4	60.7	10.7	9	42	M5xP0.8	7.4
3/8"	11	69.4	34.6	133.4	60.7	10.7	9	42	M5xP0.8	7.4
1/2"	12.5	75.7	37.3	133.4	64.1	10.7	9	42	M5xP0.8	7.4
3/4"	16	86.6	44.7	178.5	82.4	13.9	11	50	M6xP1	14.8
1"	20	102.4	51.4	178.5	96.1	20	11	50	M6xP1	19.4
1 1/4"	25	118.2	57.7	209.9	91.4	23.8	11	50	M6xP1	25.4
1 1/2"	32	125.8	62.7	208	102.7	25.8	11	70	M8xP1.25	35
2"	38	149	74.6	229.9	110.7	25.3	14	70	M8xP1.25	85
2 1/2"	50	160	80.0	229.9	115.8	24.5	14	70	M8xP1.25	80
3"	65	185	92.5	265	132	25.5	17	102	M10xP1.5	120



T +44 (0)1386 552369

W www.allvalves.co.uk

E sales@allvalves.co.uk

F +44 (0)1386 554227